



Quaildigital

PRO5 DRIVE-THRU HEADSET SYSTEM

16KHz  
PURESOUND  
wireless  
integral  
hands-free

*for team communications*

**Quail Digital Pro5 Drive-thru Headset system is an industry first, combining the latest design in high quality DECT digital wireless headsets with integral lane timing and customer-recordable greetings and crew prompts.**

The system takes the user experience to a new level for audio quality, comfort, flexibility and features for **greater productivity** and **performance**.

**Quail Digital Pro5** operates on the high quality 1.88-1.90 GHz frequency band with base station and gives an extended range inside and outside restaurants.

**Pro5** is fully configurable for single lane, tandem and dual lane restaurants all from a single base station.



The system uses the **latest** noise suppression, acoustic echo cancelling and dynamic compression techniques and algorithms to optimise the sound quality for **efficient** and **accurate** order taking and crew communication.

And now as standard on all systems, high quality **16KHz PURESOUND** audio for the highest quality headset clarity on the market.



Headsets operate hands-free, talk-lock and push-to-talk (PTT) modes, and unlike other systems there's full inter-operability between external and paging channels by any headset at any time. Order takers can operate entirely **hands-free** in full duplex mode.

To save battery power, headsets are fitted with a motion detector. If a headset is motionless for three minutes it automatically goes into energy-saving sleep mode. As soon as it's picked up again it reactivates and is ready for use.

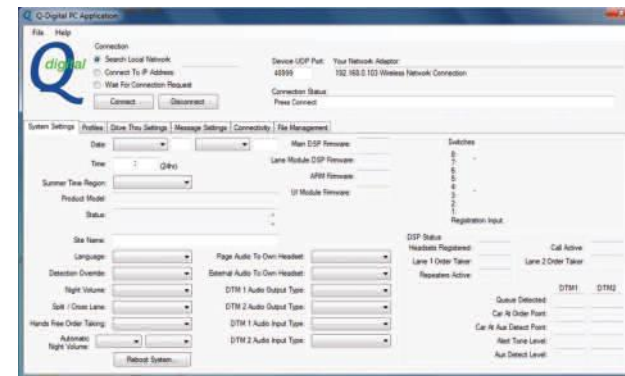


The system includes **Q-Buster**, the Quail Digital lane timer software which measures two points in the drive-thru lane generating voice prompts to headsets when vehicles exceed your selected day-part targets.

The **Message Manager** facility lets users record their own customer greetings, promotional messages and task reminders for staff. Up to 16 messages can be programmed into the system with the flexibility to select the day-parts and repeat scheduling.

The **Pro5 digital display** is simple to use. Push button key strokes and easy instructions to menus and settings make installation and set-up straightforward. The system has two password levels; one for staff on site and one for technical support. For uniformity the software stores the activation settings required by each customer so that their stores have a uniform set of features and messaging wherever they're installed.

The **Quail Digital Pro5** system is **network compatible**. Its ethernet port gives users remote access for programming updates and message downloads. The system will generate automated service requests direct to service centre.



**16KHz PURESOUND**  
Twice the **bandwidth** Twice as **clear**



**Great communications**

### DRIVE\_THRU BASE STATION Q-DTB



Operating frequency  
Facilities

DECT 1.88-1.90 GHz (licence-free and interference-free)  
Standard unit includes internal VDB, display for easier adjustments, full automated order taking method, ethernet connectivity, messages prompts, keypad messages for till support, message greeter, Q-Buster. Ready for dual lane upgrade without requiring extra unit.

Power requirements  
Dimensions HxWxD  
Weight

12v from external power supply  
370mm x 300mm x 100mm  
1.7kg

### DRIVE-THRU A10 HEADSET Q-DT8



Operating frequency  
Operating modes

DECT 1.88-1.90 GHz (licence-free and interference-free)  
Hands-free, talk-lock, push-to-talk, sleep mode though movement sensor

Voice prompts

Volume, T1, T2, page, battery low, registered, registration mode, out-of-range

Battery  
Battery life  
Charge time  
Weight

3.7v lithium polymer, removable and rechargeable  
15 hours (TBT)  
4.5 hours (TBT)  
100g

### DRIVE-THRU CHARGER Q-DTCH



Capacity  
Mounting  
Charge indicator  
Power requirements  
Dimensions HxWxD  
Weight

8 battery packs  
Wall / desk  
Dual colour LED, red to green when battery fully charged  
12v from external power supply  
205mm x 325mm x 45mm  
900g

### SPEAKER POST ASSEMBLY QD-SPA



Speaker  
Power handling  
Microphone sensitivity  
Dimensions HxWxD  
Weight

100mm, 4" driver  
14 watts, impedance 50 ohms  
38dBV/PA +/- 3db, impedance 50 ohms  
150mm x 150mm x 65mm  
300g

team  
communications

# Quaildigital

sales@quaildigital.com

UK +44 (0)20 7349 2000

US toll-free 1-888-575-1010

- Up to 12 headset users
- Wireless headsets, no beltpacks
- Hands-free, talk-lock, push-to-talk
- Single lane, tandem, dual lane
- Q-Buster time prompt
- Message greeter
- Noise and echo cancelling

www.quaildigital.com